

30 Day Stream Flow - Lynn River at Simcoe

Graph Reflects Preliminary Data from

7/2/2017 — 7/31/2017

Latest Daily Flow(m³/s): 0.865

Moving 7 Day Average(m³/s): 0.969

Moving 30 Day Average(m³/s): 1.152

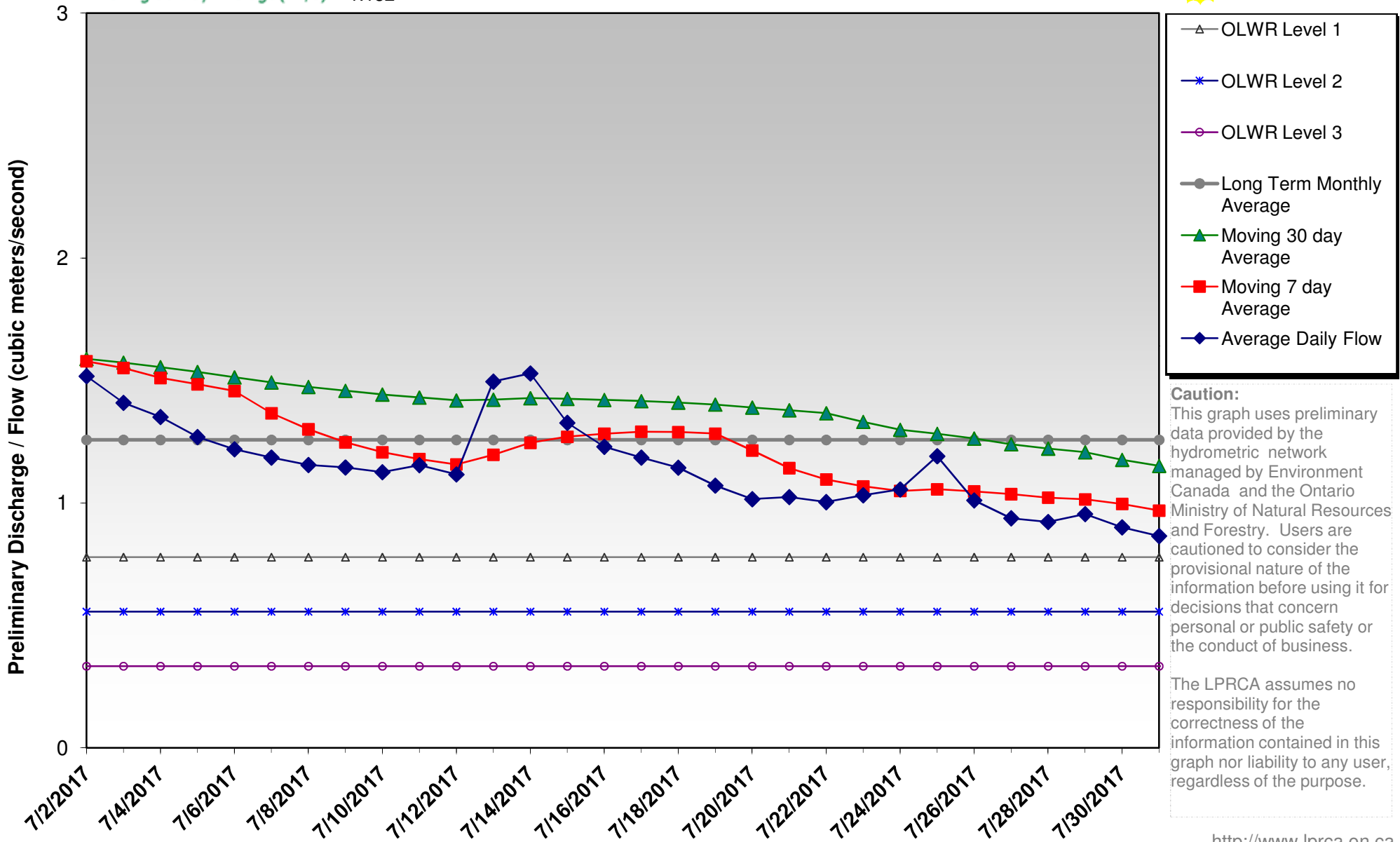
Ontario Low Water Response (OLWR) Indicators (Simcoe):

Apr - Jun: Level 1 - 1.113; Level 2 - 0.779; Level 3 - 0.557

Jul - Mar: Level 1 - 0.779; Level 2 - 0.557; Level 3 - 0.334



© LPRCA 2017
GIS SERVICES



Caution:
This graph uses preliminary data provided by the hydrometric network managed by Environment Canada and the Ontario Ministry of Natural Resources and Forestry. Users are cautioned to consider the provisional nature of the information before using it for decisions that concern personal or public safety or the conduct of business.

The LPRCA assumes no responsibility for the correctness of the information contained in this graph nor liability to any user, regardless of the purpose.