

30 Day Stream Flow - Big Otter Creek at Tillsonburg

Graph Reflects Preliminary Data from

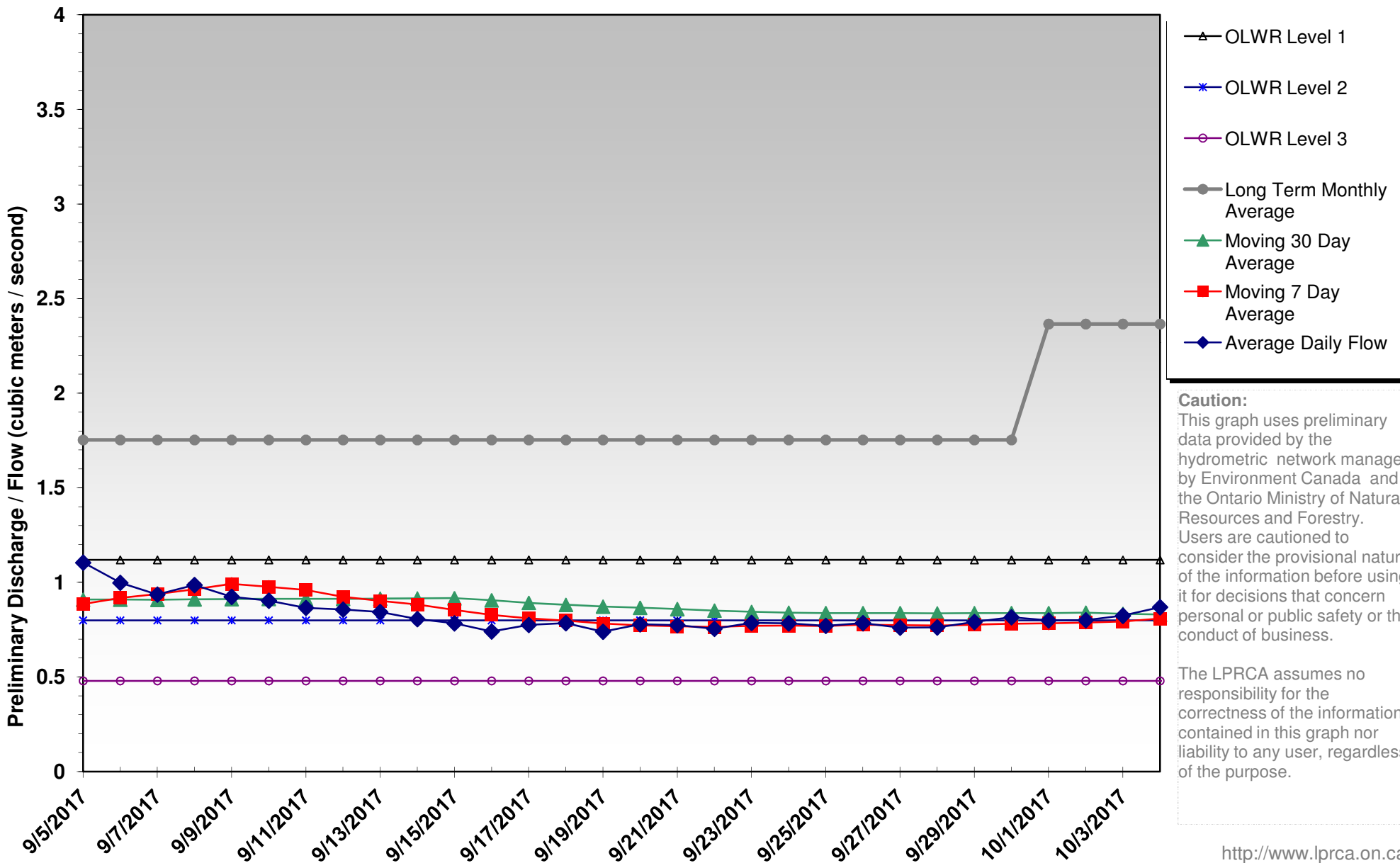
9/5/2017 — 10/4/2017

Latest Daily Flow (m³/s): 0.869
 Moving 7 Day Average (m³/s): 0.809
 Moving 30 Day Average (m³/s): 0.830

Ontario Low Water Response (OLWR) Indicators (Tillsonburg):
Apr - Jun: Level 1 - 1.590; Level 2 - 1.113; Level 3 - 0.795
Jul - Mar: Level 1 - 1.113; Level 2 - 0.795; Level 3 - 0.477



© LPRCA 2017
 GIS SERVICES



Caution:
 This graph uses preliminary data provided by the hydrometric network managed by Environment Canada and the Ontario Ministry of Natural Resources and Forestry. Users are cautioned to consider the provisional nature of the information before using it for decisions that concern personal or public safety or the conduct of business.

The LPRCA assumes no responsibility for the correctness of the information contained in this graph nor liability to any user, regardless of the purpose.