

30 Day Stream Flow - Big Creek near Kelvin

Graph Reflects Preliminary Data from

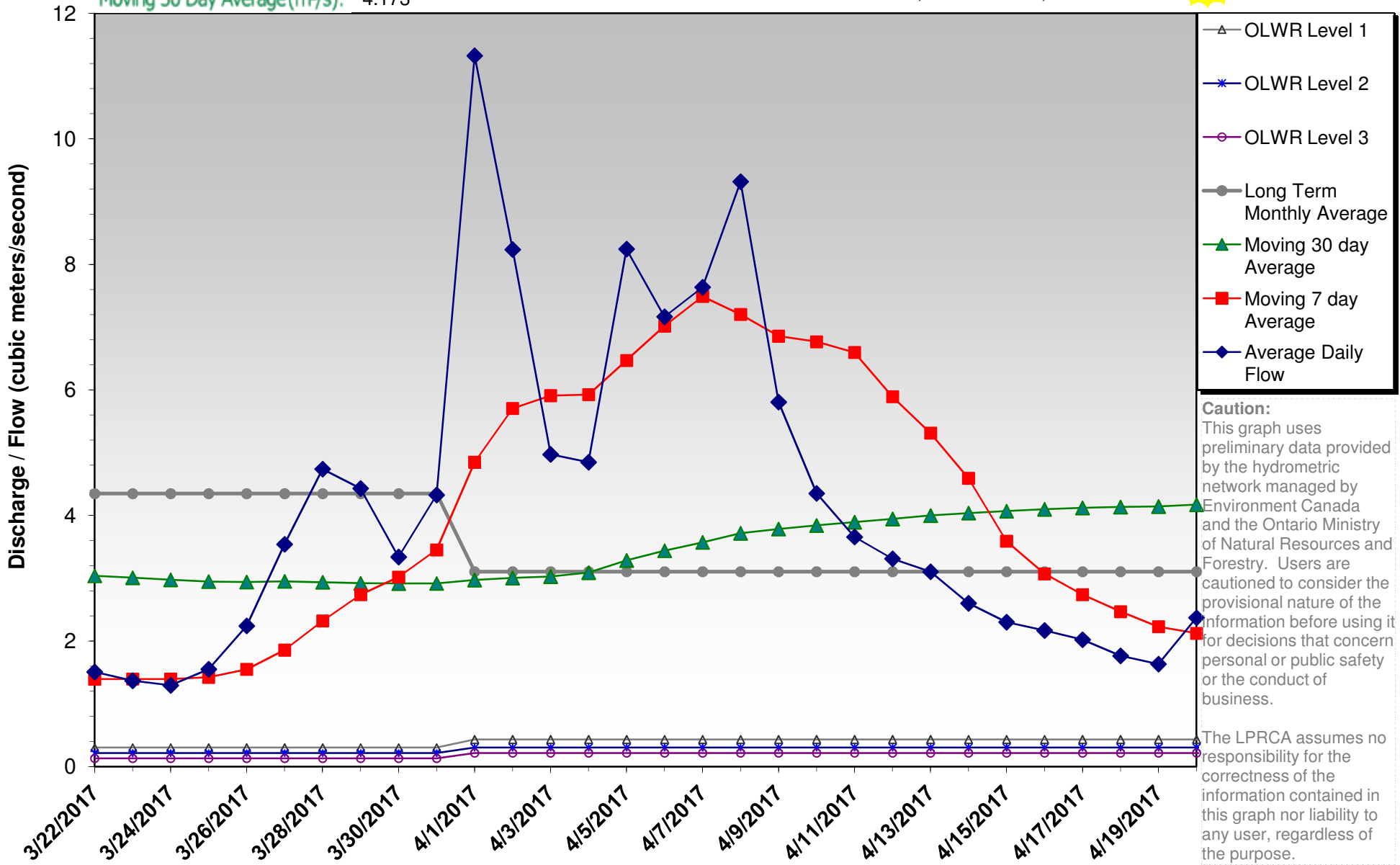
3/22/2017 — 4/20/2017

Latest Daily Flow(m³/s): 2.372
 Moving 7 Day Average(m³/s): 2.124
 Moving 30 Day Average(m³/s): 4.173

Ontario Low Water Response (OLWR) Indicators (Kelvin):
Apr - Jun: Level 1 - 0.434; Level 2 - 0.304; Level 3 - 0.217
Jul - Mar: Level 1 - 0.304; Level 2 - 0.217; Level 3 - 0.130



© LPRCA 2017
 GIS SERVICES



Caution:
 This graph uses preliminary data provided by the hydrometric network managed by Environment Canada and the Ontario Ministry of Natural Resources and Forestry. Users are cautioned to consider the provisional nature of the information before using it for decisions that concern personal or public safety or the conduct of business.

The LPRCA assumes no responsibility for the correctness of the information contained in this graph nor liability to any user, regardless of the purpose.